

1) How many different moves can white play in the starting position?

1. 8

X. 16

2. 20

2) What is the value of the white pieces when a chess game is to start?

1. 25

X. 39

2. 48

3) How many children play chess every week in the world's schools?

1. 2 million

X. 10 million

2. 25 million

4) In which country was chess invented?

1. India

X. USA

2. China

**5) How many chess queens
can there be on a chessboard
at the same time?**

1. 2

X. 18

2. 9

6) What does "Checkmate" mean?

1. The king is tired

X. The king is dead

2. The king is threatened

7) Is it possible to create a carpet image using a white king, a white knight, and a black king?

1. YES

X. NO

8) What was the name of the chess computer that first won against a world champion?

1. Deep Blue

X. Blue Sky

2. Deep death

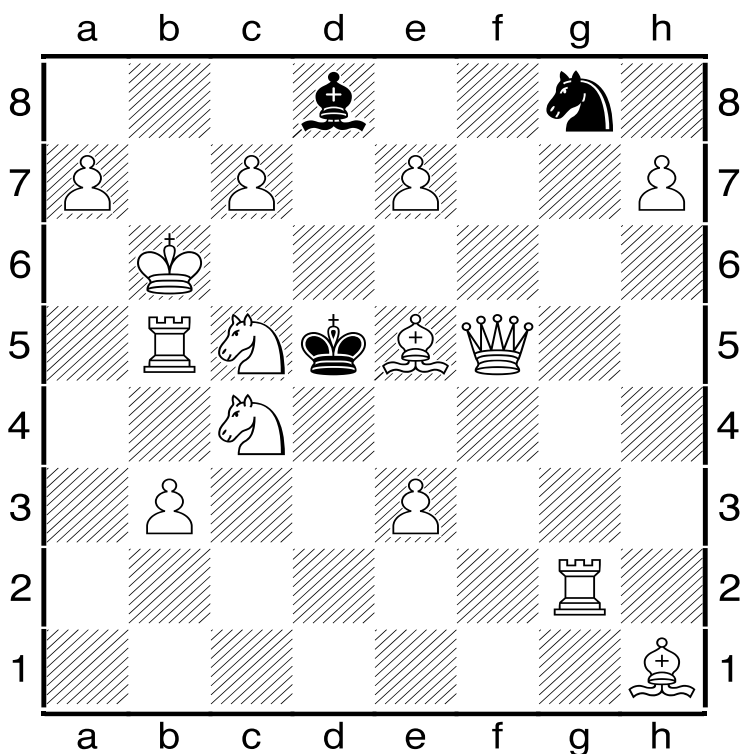
9) How many different moves can a queen make on an empty board when standing on a centre square?

1. 24

X. 27

2. 14

10) How many check mate in one move can you find for white?



1. 47

X. 37

2. 27

