

Test 1 CGS (Lesson 6)

(Circle the right answer)

Question 1

When was Chess Invented?

- 1) 4,000 years ago
- X) 150 years ago
- 2) 1,400 years ago

Question 2

Which rule is NOT included among the six chess rules? (Circle the wrong rule)

- Play calmly
- The teacher controls
- Say Hi before the game and Thanks afterwards
- Always stand up when making your move
- Touched piece
- Dropped piece
- After the game – put up the pieces.

Question 3

What does "En Passant" mean?

- 1) In passing
- X) In the driver's seat
- 2) In the window frame

Question 4

A pawn goes over to the other side of the board. What then?

- 1) Nothing
- X) The pawn can be put where he wants

The board

- 2) It turns into a queen, a rook, a bishop or a knight

Question 5

Can white castle in the position below?



YES NO

Question 6

How many black pieces does the white bishop threaten?

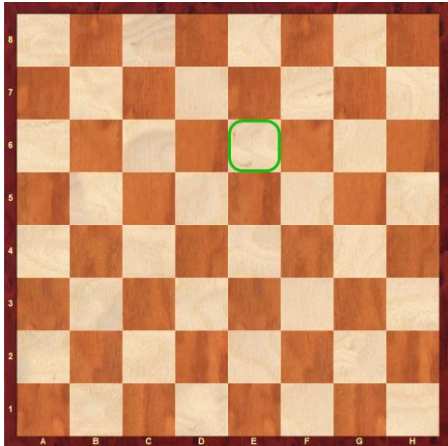


- 1) 2
- X) 3
- 2) 4

Question 7

The name of the square?

- 1) e6
- X) e5
- 2) f6



Fråga 8

Can the white queen move to b7?



YES

NO

Question 9

How many black pieces do white threaten to capture in the next move?



- 1) 2
- X) 4
- 2) 7

Question 10

How many moves can a knight make from a corner?

- 1) 1
- X) 2
- 2) 3